

---

---

# REVELATIONS AT CONCORD

---

Enter to Worship: Depart to Serve

May 2017

---

## Mission Statement:

To share the Word of God  
and draw people unto Christ  
through a ministry of service,  
love, compassion and outreach.

## INSIDE THIS ISSUE

- 1 Pastor's Corner
- 2 Prayer Requests; Weekly Attendance; Memorial & Honor Gifts
- 3 Birthdays; Fellowship & Service Opportunities
- 4 Fellowship & Service Opportunities continued
- 5 Calendar

## Pastor's Corner

Paul Dawson shares a quick lesson about the Holy Spirit by relaying something that happened on his family vacation. Dawson writes, "While visiting Grand Coulee Dam, my family and I were surprised to see that the visitor's center was dark. It was a sunny day, so we thought the center might have tinted windows, but as we got closer we realized there were no lights on. We went in and saw that none of the displays were working.

Suddenly it became clear: there was no power to the center. Due to a technical difficulty of some kind, the visitor's center that sat only hundreds of feet from a hydroelectric dam had no power. How could something be so close to the power source, yet not be "plugged in"?"

That story, about the visitor's center having no power despite being at the source of power is exactly what happens when we as the Body of Christ fail to, "plug in," to the Holy Spirit. The last month or so has been a great reminder to me, and hopefully, all of us, that God, the Creator of the Universe, is active and present in each of our lives in the form of the Holy Spirit. If we can get beyond our own doubts and fears, who knows what we might achieve? I urge you to listen to what the Spirit may be saying to you...where it might be calling you to go. I'm excited by what we can do if we are open to the Spirit, and I'm prepared to go where the Spirit leads. Let's figure it out together!

*Michael*

## Prayer Requests

### EXTENDED CARE FACILITIES:

Doris Hauser (Clemmons Village 11)  
Marie Horton (Salem towne)

### MILITARY:

Carl Craft  
Christopher Ford  
Jonathan Hinshaw  
Scott Kyser  
Jonathon Prisk

### CHURCH FAMILY:

Lib Barefoot  
Danny Binkley  
Kit & Martin Binkley  
Margaret Boggs  
Glenn Boone  
Nancy & Larry Cook  
Jim Friend  
Donna Garner  
Phil, Vicki, and Robert Ingram  
Family of Phyllis Jones  
Stefanie & Bryan Jones  
Jean Messick  
Sylvia Russell  
Jean Suddarth  
Kathy & Darrell Surface  
Frank Transou

### CHURCH FRIENDS:

Carolyn Benge  
Family of Pat Barker  
Wesley Freshwater  
Charles Holder  
Henry and Carol Jackson  
Tom Jones  
Kathleen Larson  
Ronnie Lee  
Chris Mealer  
Wanda Needham  
Andrea and Rowan Ford O'Cain  
Braydon Odom  
Peter Robie  
Dan Simmons  
Carolyn Smitherman  
Aline Sparks  
Kathy Surface's Brother and God Daughter  
Tracey Surface  
Amanda Tetzlaff  
Mickey Watson  
Allen West  
Sam Whitehurst's Brother

## Weekly Attendance and Gifts - August

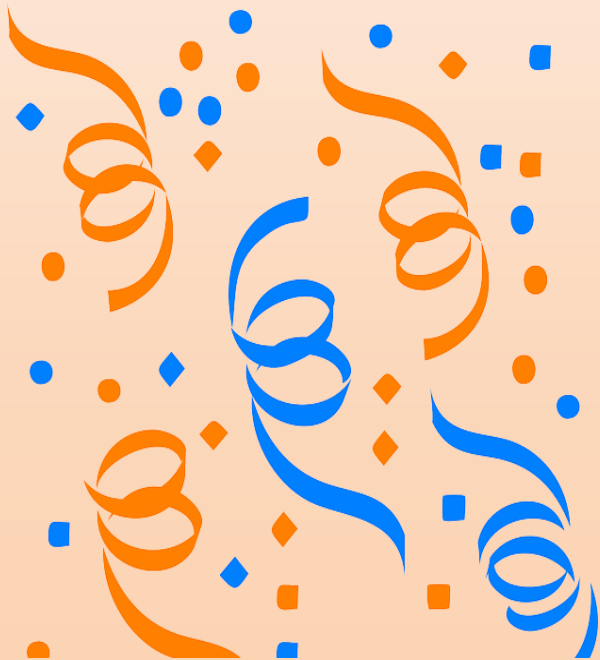
Amount Needed per Week for General Budget:  
\$2,467.00

5/7/17	Attendance:	26
	General Budget	2,305.00
	FLC Principle	100.00
5/14/17	Attendance:	32
	General Budget	2,130.00
	FLC Principle	0.00
5/21/17	Attendance:	24
	General Budget	975.00
	FLC Principle	400.00
5/28/17	Attendance:	27
	General Budget	7,011.00
	FLC Principle	0



## HAPPY BIRTHDAY

- 1 Jennifer Gibson
- 5 Chris Styers
- 7 Tim Hill  
Robert Ingram
- 9 Ron Hammac  
Marie Horton
- 11 Jim Friend
- 12 Shannun Breier
- 14 Sarah Sain Prevette
- 18 Lucy Flack
- 26 Caroline Phillips
- 29 Bridgett Hill



## Prayer Shawl Group

*The Prayer Shawl Group meets every other Thursday at 10:00 am to work on shawls to donate to those in need of a special blessing in their lives. All are welcome to join this ministry. If you are unable to knit or crochet, we are willing to help you learn. Call Helen Gainsford at 923-7449.*

*This month we will meet on June 1<sup>st</sup>, June 15<sup>th</sup>, and June 29<sup>th</sup>..*

## Church Nursery

According to our Church's Safe Sanctuary Policy, we always need at least two people in attendance whenever we are caring for our children.

If you are able to help in the Nursery, please contact Helen at 923-7449.

The Safe Sanctuary Policy can be viewed on our Church Website: <http://www.concordumclewisville.org/Links>



## *Plowpoint Ministry*

On Sunday, June 11th, we will begin the next step in our Plowpoint Ministry process, a multi-week study called, "Choosing the Faithful Path." We will meet in the Family Life Center at 3pm for our first session on the 11th. This is an important time for as many people as possible to gather and discuss our history, our current situation, and what we need to do in order to revitalize and reach out into our community. Please make it a priority to be there at 3pm on June 11th as we begin the next stage and make a plan for our church's future.

## *Vacation Bible School*

VBS will be Sunday, July 30<sup>th</sup>, Monday July 31<sup>st</sup>, and Tuesday, August 1<sup>st</sup>. We will gather in the Family Life Center from 5:30pm-6:30pm each evening. If you would like to volunteer, please let Helen Gainsford know.

## *Transportation Help*

If there is anyone in the community who needs help with transportation to church or doctor appointments, please contact Charlene Teague at 336-413-0913. If you are able to assist in providing transportation for those in need, please contact Charlene.

## *Monthly Prayer Meetings*

Please join us for a time of prayer for our church and community each month on the first Wednesday at 7pm, and the third Saturday at 8am. This month, they fall on Wednesday, May 3rd and Saturday, May 20<sup>th</sup>.

## *Family Nite Out*

There will be no Family Nite Out in June.

## *Women's Handicrafts*

We will meet on Wednesday, June 21<sup>st</sup> at 10:00 am for a time of fellowship in the Family Life Center. All are invited to come join in the fun. Bring any handwork with you, or just come and enjoy the fellowship.



## *United Methodist Women*

UMW meets on first Monday of each month at 10:00 am. This month, they will meet **June 5<sup>th</sup>**.

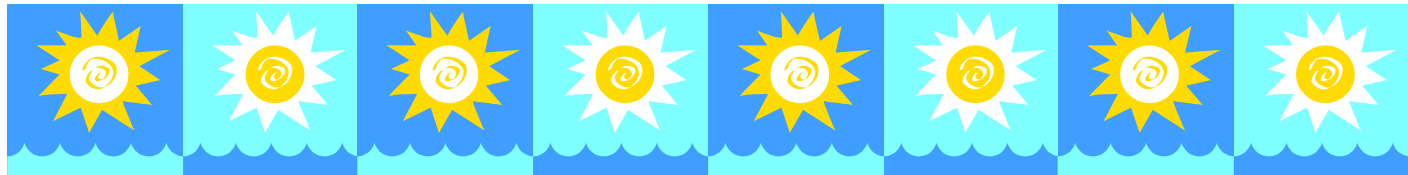
Also, remember to continue collecting Campbell soup labels for education, including the bar code, and other education points on various other products.

The little blue education coupons do not have a bar code attached. They are found on such products as Zip-Lock bags, Cheerios, and various other products.

These coupons are helpful for purchasing educational materials.

*United Methodist Women shall be a community of women whose purpose is to know God and to experience freedom as whole persons through Jesus Christ; to develop a creative, supportive fellowship; and to expand concepts of mission through participation in the global ministries of the church.*

June 2017						
Sun	Mon	Tue	Wed	Thu	Fri	Sat
				<b>1</b> 10am Prayer Shawl  7pm Choir	<b>2</b>	<b>3</b>
<b>4</b> 10am SS 11am Worship	<b>5</b> 10am UMW	<b>6</b>	<b>7</b> 7pm Prayer Meeting	<b>8</b> 7pm Choir	<b>9</b>	<b>10</b>
<b>11</b> 10am SS 11am Worship 3pm Plowpoint Ministry	<b>12</b>	<b>13</b>	<b>14</b>	<b>15</b> 10am Prayer Shawl  7pm Choir	<b>16</b>	<b>17</b> 8am Prayer Meeting
<b>18</b> 10am SS 11am Worship	<b>19</b>	<b>20</b>	<b>21</b> 10am Women's Handicraft Group  7pm Admin Council	<b>22</b> 7pm Choir	<b>23</b>	<b>24</b>
<b>25</b> 10am SS 11am Worship	<b>26</b>	<b>27</b>	<b>28</b>	<b>29</b> 10am Prayer Shawl 7pm Choir	<b>30</b>	





## SUNDAY BULLETINS

Our Sunday Bulletins are now available on the church website:  
<http://www.concordumclewisville.org/Bulletins>

The new Sunday bulletin will be posted by Monday afternoon.

*For where two or three are gathered together in My name, I am there in the midst of them.”  
Matthew 18:20*

*“For the Father seeks such as these to worship him.”  
John 4:23*

Concord United Methodist Church  
PO Box 1095  
Lewisville, NC 27023

