

---

# REVELATIONS AT CONCORD

---

Enter to Worship: Depart to Serve

June 2016

---

## Mission Statement:

To share the Word of God  
and draw people unto Christ  
through a ministry of service,  
love, compassion and outreach.

## INSIDE THIS ISSUE

- 1 Pastor's Corner
- 2 Prayer Requests; Weekly Attendance
- 3 Birthdays; Fellowship & Service Opportunities
- 4 Fellowship & Service Opportunities continued
- 5 Calendar

## Pastor's Corner

Revelation 5: 11-14 (NIV)

Then I looked and heard the voice of many angels, numbering thousands upon thousands, and ten thousand times ten thousand. They encircled the throne and the living creatures and the elders. In a loud voice they were saying, "Worthy is the Lamb, who was slain, to receive power and wealth and wisdom and strength and honor and glory and

praise!" Then I heard every creature in heaven and on earth and under the earth and on the sea, and all that is in them, saying, "To him who sits on the throne and to the Lamb be praise and honor and glory and power, for ever and ever!" The four living creatures said, "Amen," and the elders fell down and worshiped.

In our Spring Bible Study, the group moved through the Book of Revelation. It was a fascinating journey through the visions of John and the message of hope he sent to various churches facing persecution. The above passage is one of the key passages from the entire book. In it, John witnesses a heavenly worship service, as the world glorifies Jesus Christ, the Lamb who was slain. It is an enduring message to all future believers. No matter what is happening in the world, no matter what is going on in your life, know that Jesus Christ is in charge, and that God will be victorious. Because the lamb was slain, he is given all power and wisdom. The things of the world, temptation, sin, evil, etc...they are powerful and scary, but God is even more powerful, and to trust in God and resist the powers of the world is worth it in the end, because of who God is and what God has done. Praise be to God, and praise be to the Lamb, Jesus Christ!

*Michael*

## Prayer Requests

### EXTENDED CARE FACILITIES:

Doris Hauser (Clemmons Village 11)  
Clara Tuttle (Clemmons Village 1)  
Marie Horton (Salem towne)

### MILITARY:

Carl Craft  
Christopher Ford  
Jonathan Hinshaw  
Scott Kyser  
Jonathon Prisk

### CHURCH FAMILY:

Bill Beard  
Margaret Boggs  
John Breier  
Larry Cook  
Nancy Cook  
Jim Friend  
Donna Garner  
Diane Huffman  
Family of Lewana Huffman  
Phil, Vicki, and Robert Ingram  
Stefanie & Bryan Jones  
Jean Messick  
Sylvia Russell  
Darrell Surface  
Frank Transou  
Norma Willard

### CHURCH FRIENDS:

Nancy Butcher  
Ann Doby  
Albert Doub  
Keith Gerrell  
Joyce Gossett  
Kay Griffis  
Mary Harrell  
Charles Holder  
Rosa Hout  
Jay Kiser  
Kathleen Larson  
Dennis Lee  
Vera Madden  
Family of Bill Morrow  
Rev. Margaret Nunez  
Tony Passanita  
Amanda Tetzlaff  
Jerry Scott  
Taylor Wise

## Weekly Attendance and Gifts - April

Amount Needed per Week for General Budget:  
\$2,467.00

5/1/16	Attendance:	34
	General Budget	2,751.00
	FLC Principle	100.00
5/8/16	Attendance:	42
	General Budget	1,831.00
	FLC Principle	400.00
5/15/16	Attendance:	41
	General Budget	3,381.00
	FLC Principle	100.00
5/22/16	Attendance:	35
	General Budget	948.00
	FLC Principle	0.00
5/29/16	Attendance:	28
	General Budget	
	FLC Principle	

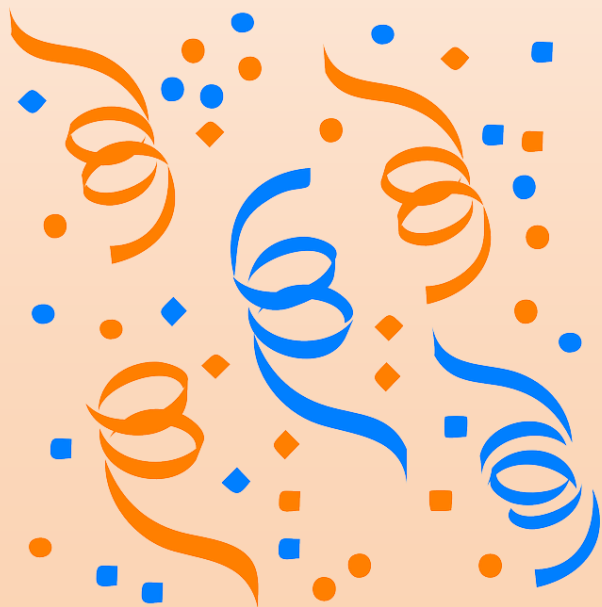
## Church Nursery

According to our Church's Safe Sanctuary Policy, we always need at least two people in attendance whenever we are caring for our children. If you are able to help in the Nursery, please contact Helen at 923-7449. The Safe Sanctuary Policy can be viewed on our Church Website:  
<http://www.concordumclewisville.org/Links>



# HAPPY BIRTHDAY

- 1 Jennifer Gibson
- 5 Phyllis Jones  
Chris Styers
- 7 Robert Ingram  
Tim Hill
- 9 Marie Horton  
Ron Hammac
- 11 Jim Friend
- 12 Shannun Breier
- 14 Sarah Sain Prevette
- 18 Lucy Flack
- 26 Caroline Phillips
- 29 Bridgett Hill



## *Prayer Shawl Group*

*The Prayer Shawl Group meets every other Thursday at 10:00 am to work on shawls to donate to those in need of a special blessing in their lives. All are welcome to join this ministry. If you are unable to knit or crochet, we are willing to help you learn. Call Helen Gainsford at 923-7449.*

*This month we will meet on June 2<sup>nd</sup>, June 16<sup>th</sup>, and June 30<sup>th</sup>.*

## *Family Nite Out*

Family Nite Out will be on **Wednesday, June 1<sup>st</sup> at 6:00 pm**. The menu will be Hotdogs with all the fixings. Volunteers are needed to help serve and clean up. Donations of dessert will be appreciated. If you are able to help in any way, please call Nancy Cook at 945-5691.

## *Anniversary Cookbook*

The Concord Anniversary Cookbook, celebrating the 235<sup>th</sup> year of our church, is available.

The Cookbook contains a varied selection of recipes submitted by the members, friends, and past members of Concord.

The cost for the book is \$15 each.

To place your order, call Lib Barefoot (766-7900) or Helen Gainsford (923-7449).

## *Vacation Bible School*

This year our Vacation Bible School theme will be "The Life and Times of John Wesley." The dates will be August 3<sup>rd</sup> through August 6<sup>th</sup>. If you are able to help us in any way please contact Helen @ 336-923-7449. Please advertise this to any children in your family and neighborhood.

## Women's Handicrafts

We will meet on Wednesday, June 8<sup>th</sup> at 10:00 am for a time of fellowship in the Family Life Center. All are invited to come join in the fun. Bring any handwork with you, or just come and enjoy the fellowship.

## Flowers

Contact Margaret Boggs (945-2941) if you would like to place flowers in the sanctuary for Sunday services.

If anyone has flowers in their yard that they would like to donate to the church, call Margaret and she will be happy to arrange your flowers in the Sanctuary for Sunday services.

## Volunteers Needed

*There is a need for people to close up and lock the sanctuary building after Sunday Worship Services.*

*This entails removing any trash, switching off the lights, setting the thermostat, and locking the doors.*

*With enough volunteers you would only need to do this for a period of one month.*

*If you are able to help during any remaining month this year, please contact Janet Ford (336-945-2859), Lib Barefoot (336-766-7900), or Helen Gainsford (336-923-7449).*

## Message from Trustees

*The Trustees would like to remind everyone who uses our facilities that we are all called to be good stewards of our resources.*

*If you are the last person to leave the building, please make sure that all lights are turned off, the a/c or heat is set at the appropriate temperature, and that you set the alarm and lock the doors.*



## United Methodist Women

Polly Caudle, District Officer will have the program for the June 6 meeting. Polly will share mission experiences and updates from the UMW Conference. I'm sure that Polly will have an inspirational program relating her missional experiences. All women are welcome. Please join us at 10 AM, June 6!

*United Methodist Women shall be a community of women whose purpose is to know God and to experience freedom as whole persons through Jesus Christ; to develop a creative, supportive fellowship; and to expand concepts of mission through participation in the global ministries of the church.*

The UMW is saving and collecting "education points" or "coupons" from labels. These are the little box top points on such products as Cheerios, Ziploc bag boxes, and many others. The other is the coupon WITH bar code that is located on other products such as those by the Campbell Soup Company. Check your kitchen items for these. There are several products which participate. These can be turned into educational money for schools. Ours will benefit Lewisville Elementary.

Please help us collect these labels. They may be placed in the plastic box in the Narthex under the stairs.



June 2016						
Sun	Mon	Tue	Wed	Thu	Fri	Sat
			<b>1</b> 6:00 Family Nite Out	<b>2</b> 10:00 PrayerShawl 7:00 Choir	<b>3</b>	<b>4</b>
<b>5</b> S/S Worship	<b>6</b> 10:00 UMW	<b>7</b>	<b>8</b> 10:00 Women's Handicrafts	<b>9</b> 7:00 Choir	<b>10</b>	<b>11</b>
<b>12</b> S/S Worship	<b>13</b>	<b>14</b>	<b>15</b> 7:00 Admin. Board	<b>16</b> 10:00 PrayerShawl 7:00 Choir	<b>17</b>	<b>18</b>
<b>19</b> S/S Worship	<b>20</b>	<b>21</b> 7:00 Outreach	<b>22</b>	<b>23</b> 7:00 Choir	<b>24</b>	<b>25</b>
<b>26</b> S/S Worship	<b>27</b>	<b>28</b>	<b>29</b>	<b>30</b> 10:00 PrayerShawl 7:00 Choir	<b>Notes:</b>	

**This Month's Helpers:**

Ushers: Lester & Sylvia Russell

**LCAP item for June is Turnip Greens**



## SUNDAY BULLETINS

Our Sunday Bulletins are now available on the church website:  
<http://www.concordumclewisville.org/Bulletins>

The new Sunday bulletin will be posted by Monday afternoon.

*For where two or three are gathered together in My name, I am there in the midst of them.”  
Matthew 18:20*

*“For the Father seeks such as these to worship him.”  
John 4:23*

Concord United Methodist Church  
PO Box 1095  
Lewisville, NC 27023

